

LF-8

Main Features

- Improved operator safety, ergonomics and comfort
- Vehicle height of 1 850 mm
- Best in class loading performance
- ROPS / FOPS certified canopy
- Closed Cabin with airconditioner (optional)
- Extended canopy for better visibility and ergonomics
- Extremely robust frame and system design resulting in lowest operating cost
- Customized buckets optimized for soft rock applications available.
- Excellent Traction
- Separate brake flushing circuit
- CAN BUS electronics



MAIN DIMENSIONS

| | |
|--|--------------------------|
| Length (tramming position) | 9 321 mm |
| Length (loading position) | 9 650 mm |
| Width (at cabin) | 3 000 mm |
| Width (at drive unit) | 2 675 mm |
| Width (at bucket) | 2 850 mm |
| Height, laden (above drive unit) | 1 370 mm |
| Height, laden (above driver's canopy) | 1 850 mm |
| Max. tipping height | 569 mm |
| Bucket capacity (SAE heaped/SG Specific) | 4.5 - 5.5 m ³ |

ENGINE

| | |
|------------------------------|----------------------------------|
| Manufacturer | Cummins |
| Type | QSB 6.7 (EU Stage V) |
| Design | Water cooled diesel engine |
| Power | 173 kW / 2 200 min ⁻¹ |
| Air intake system | Dry air filter |
| Exhaust system | DPF and SCR |
| Starter power / voltage | 4.0 kW / 24 V |
| Alternator current / voltage | 80 A / 24 V |

DRIVE TRAIN

| | |
|--------------|---------------------------------------|
| Transverter | |
| Manufacturer | Dana |
| Type | TE 14 |
| Design | Four Forward and Reverse |
| Upbox | |
| Manufacturer | Rogelberg |
| Type | Transfer Box |
| Design | Gearbox with ratio 1 and offset 400mm |

WEIGHTS

| | |
|-------------------------|-----------|
| Operating weight | 25 000 kg |
| Payload capacity | 8 000 kg |
| Front axle load, empty | 11 125 kg |
| Rear axle load, empty | 13 875 kg |
| Front axle load, loaded | 23 319 kg |
| Rear axle load, loaded | 9 570 kg |

WHEELS AND TIRES

| | |
|---------------|-----------------|
| Front wheels | |
| Rim size | 17.0 - 20 / 2.0 |
| Tire size | 20.5 - 25 |
| Tire pressure | 7.5 ± 0.1 bar |
| Rear wheels | |
| Rim size | 17.0 - 20 / 2.0 |
| Tire size | 20.5 - 25 |
| Tire pressure | 7.5 ± 0.1 bar |

AXLES

| | |
|--------------|----------------------|
| Front axle | Rigid planetary axle |
| Manufacturer | Kessler |
| Type | D91 PL408-NLB-FS |
| Differential | Standard |
| Rear axle | Rigid planetary axle |
| Manufacturer | Kessler |
| Type | D91 PL408-NLB-FS |
| Differential | No-Spin |

BRAKES

| | |
|----------------|--|
| Design Service | Multi disk spring brake (SAHR) Hydr. actuated, ext. cooled |
| Design Parking | Multi disk spring brake (SAHR) Hydr. actuated, ext. cooled |

ELECTRICAL EQUIPMENT

| | |
|--------------------|-------------------|
| Operating voltage | 24 V |
| Battery | 2 x 12 V / 105 Ah |
| Control System | B&R X90 |
| I-Button Ignition | |
| Reverse camera | |
| Brake wear sensors | |

LIGHTING SYSTEM

| | |
|--------------------------|-----------------------|
| Headlights-LED Type | 4 x 75 W |
| Reverse lights-LED Type | 2 x 75 W |
| Cabin driving lights x 2 | 1 to front, 1 to rear |

DUMP / HOIST HYDRAULIC SYSTEM

| | |
|---------------------------------------|-------------------------|
| Pump displacement volume | 64 cm ³ /rev |
| System pressure at dump cylinder | 190 bar |
| System pressure at hoist cylinder | 190 bar |
| Number of hoist cylinders | 2 |
| Number of dump cylinders | 1 |
| Boom raising time | 6.6 s |
| Bucket raising, from dumping position | 5.9 s |

STEERING HYDRAULIC SYSTEM

| | |
|------------------------------|------------------------------|
| Pump displacement volume | 36 + 64 cm ³ /rev |
| System pressure | 200 bar |
| Number of steering cylinders | 2 |

STEERING CAPACITIES

| | |
|-------------------------|---|
| Design | Hydraulic articulated joystick steering |
| Steering angle | ± 42° |
| Outer turn radius Right | 6 232 ± 200 mm |
| Inner turn radius Right | 3 046 ± 200 mm |
| Outer turn radius Left | 6 232 ± 200 mm |
| Inner turn radius Left | 2 690 ± 200 mm |

FILLING VOLUMES

| | |
|---|-----------|
| Fuel tank | 200 l |
| Hydraulic tank | 220 l |
| Engine with oil filter | 18.5 l |
| Torque converter / power shift transmission circuit | 36 l |
| Front axle differential | 42 l |
| Front axle planetary gear | 2 x 4.5 l |
| Rear axle differential | 42 l |
| Rear axle planetary gear | 2 x 4.5 l |
| Aircon compressor | 0.5 l |
| Header tank | 24 l |
| Brake flushing tank | 27 l |

TRAMMING CAPACITIES

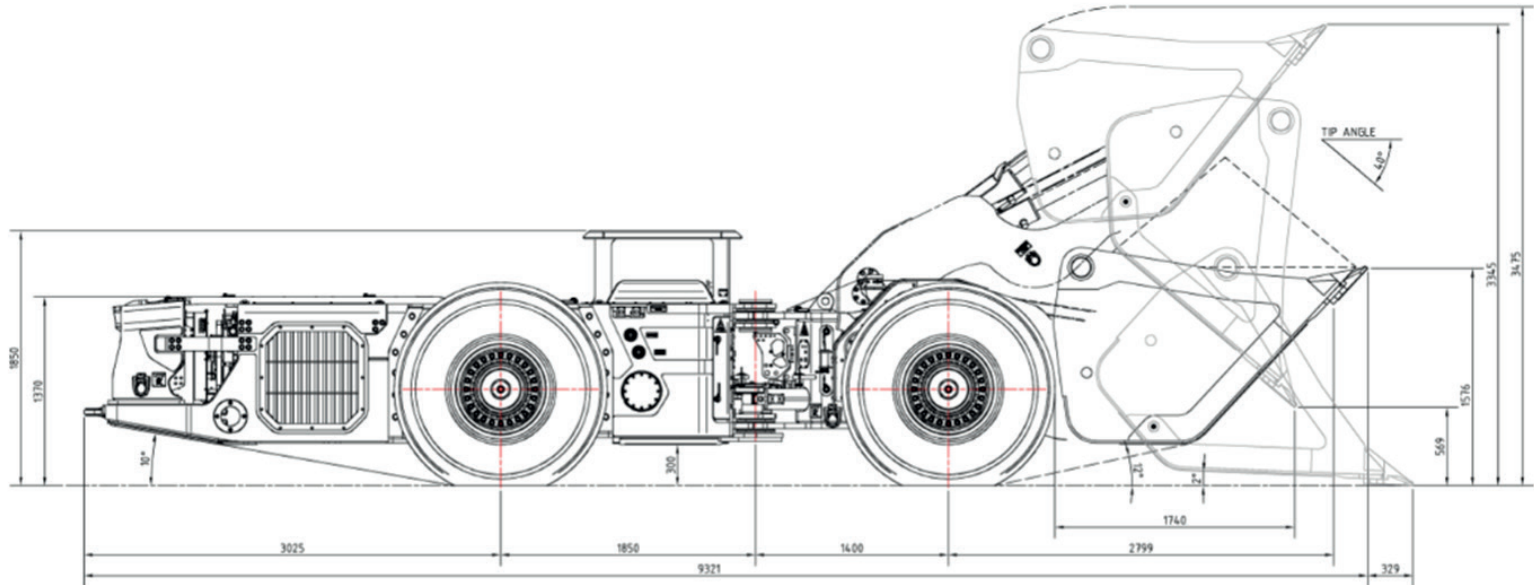
| | |
|--|----------|
| Max. tramming speed (laden fwd/rev, on level road) | |
| 1st gear | 3.9 km/h |
| 2nd gear | 7.9 km/h |
| 3rd gear | 15 km/h |
| 4th gear | 22 km/h |
| Maximum admissible gradient | 28% |
| Maximum transverse slope | 15% |
| Maximum tractive effort | 220 kN |
| Breakout force | 156 kN |

OPTIONS

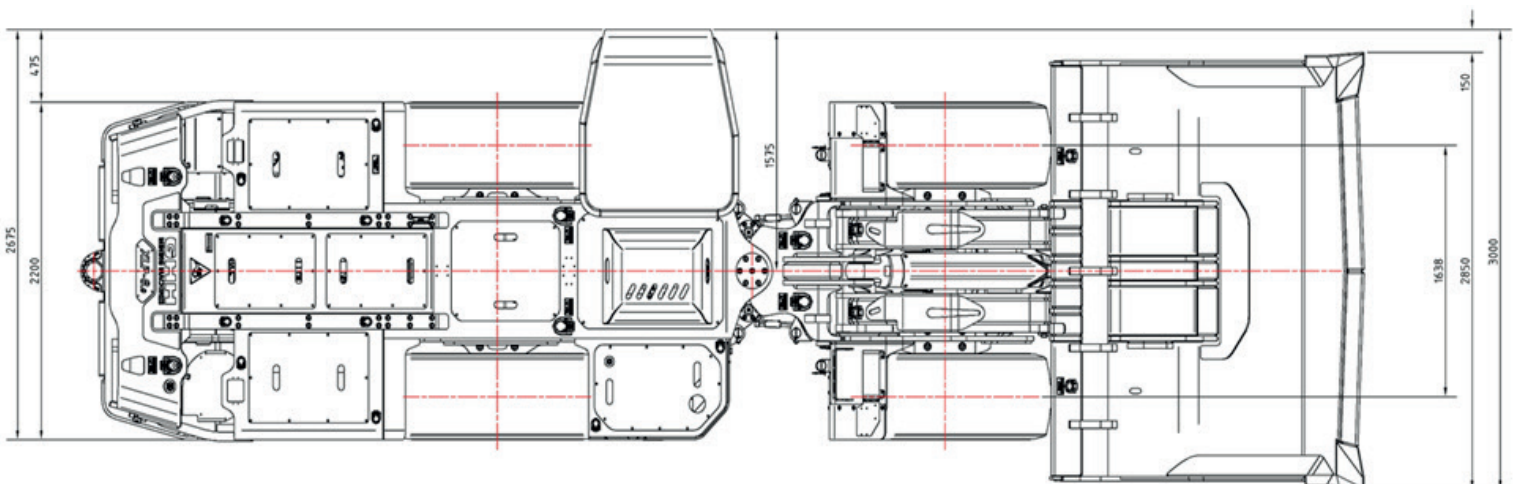
| |
|----------------------------------|
| Closed cabin with airconditioner |
| Fire Suppression manual / auto |
| Spare wheel |
| Chock blocks |
| Bucket mounted driving camera |



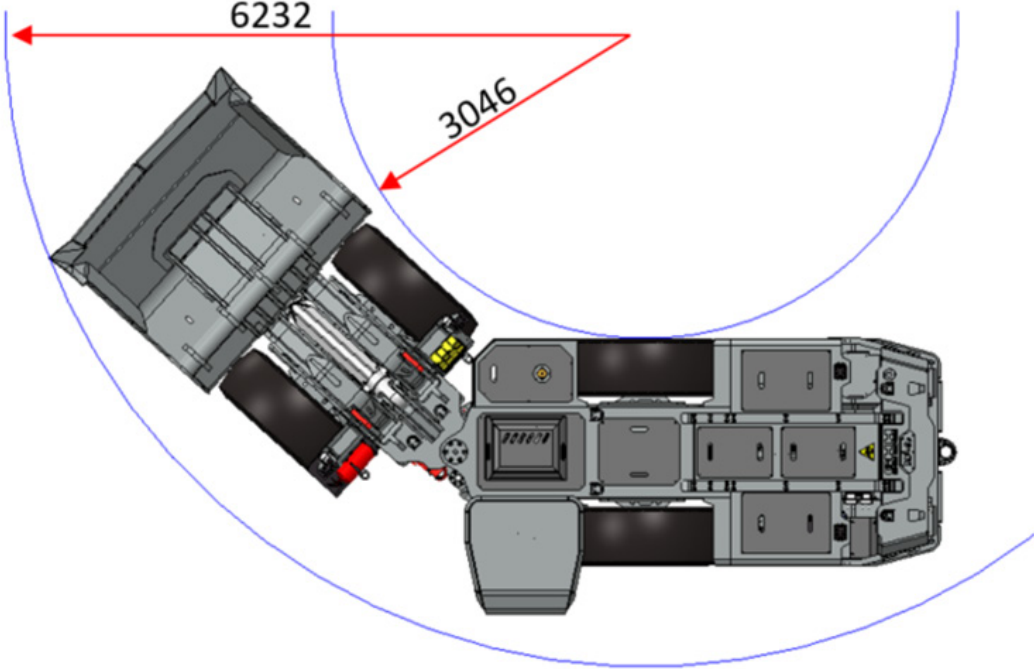
Side View



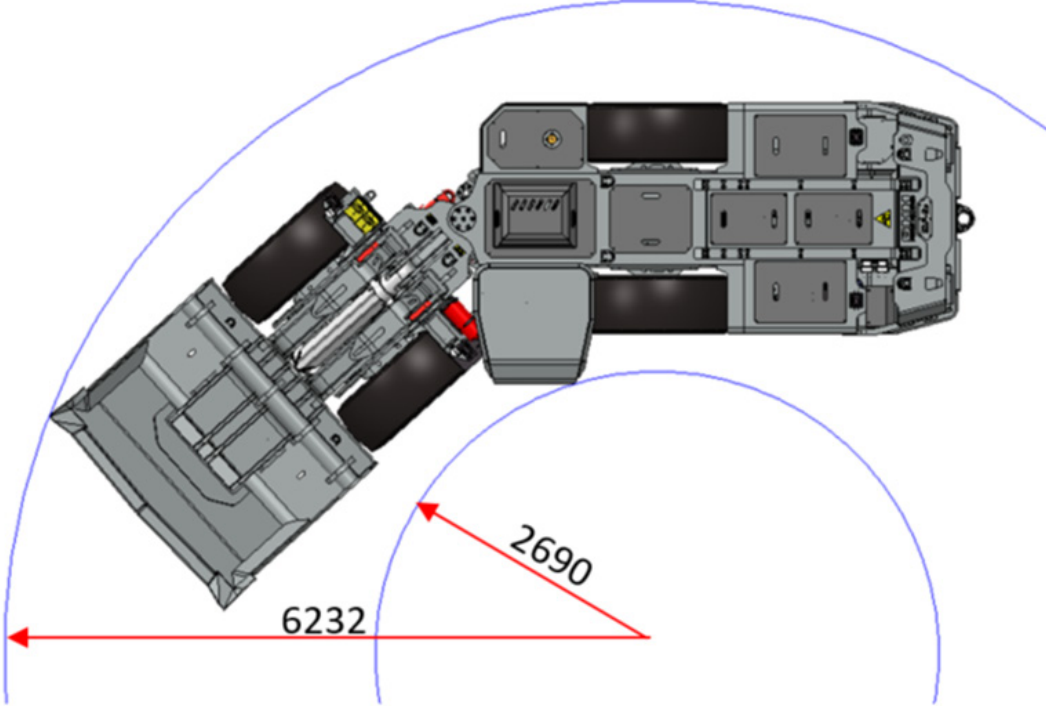
Top View



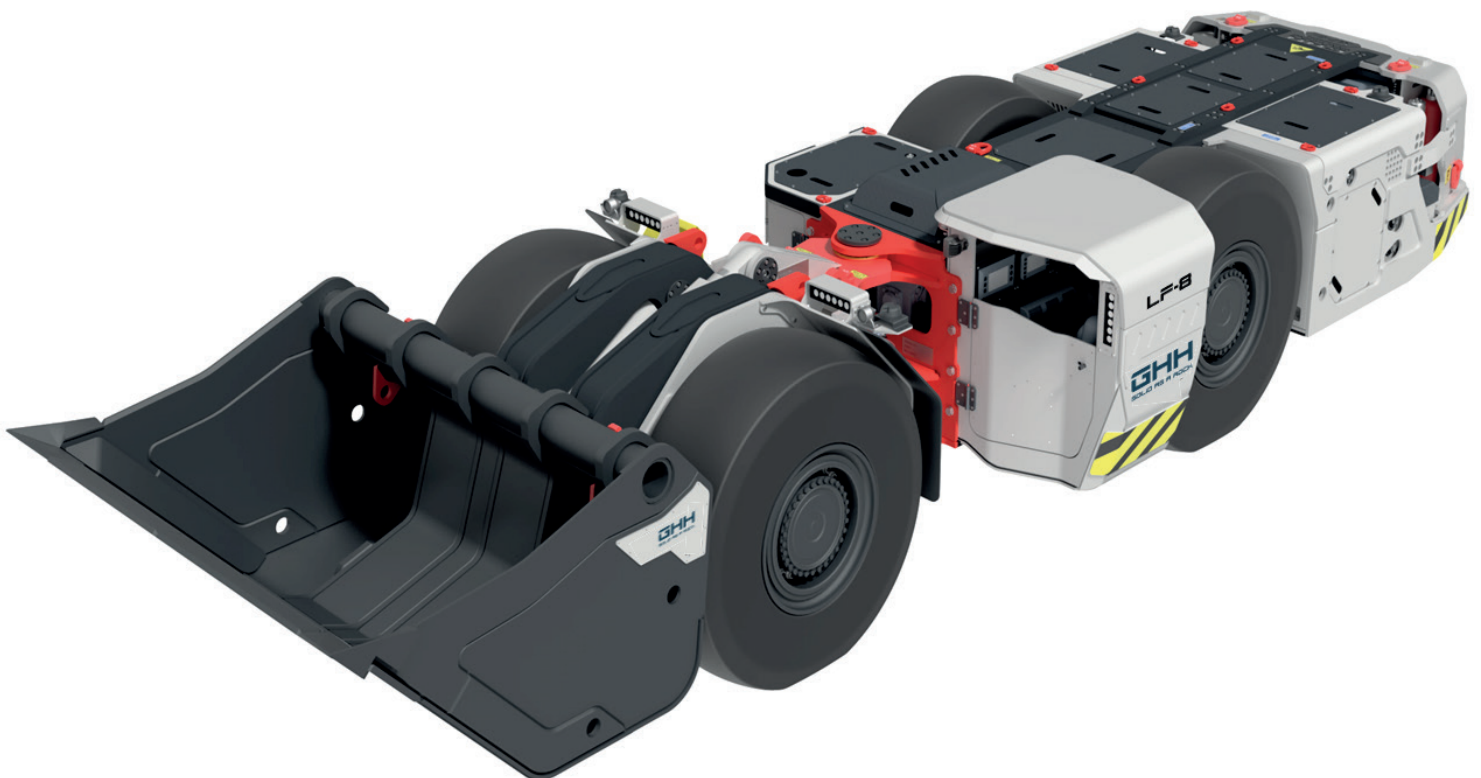
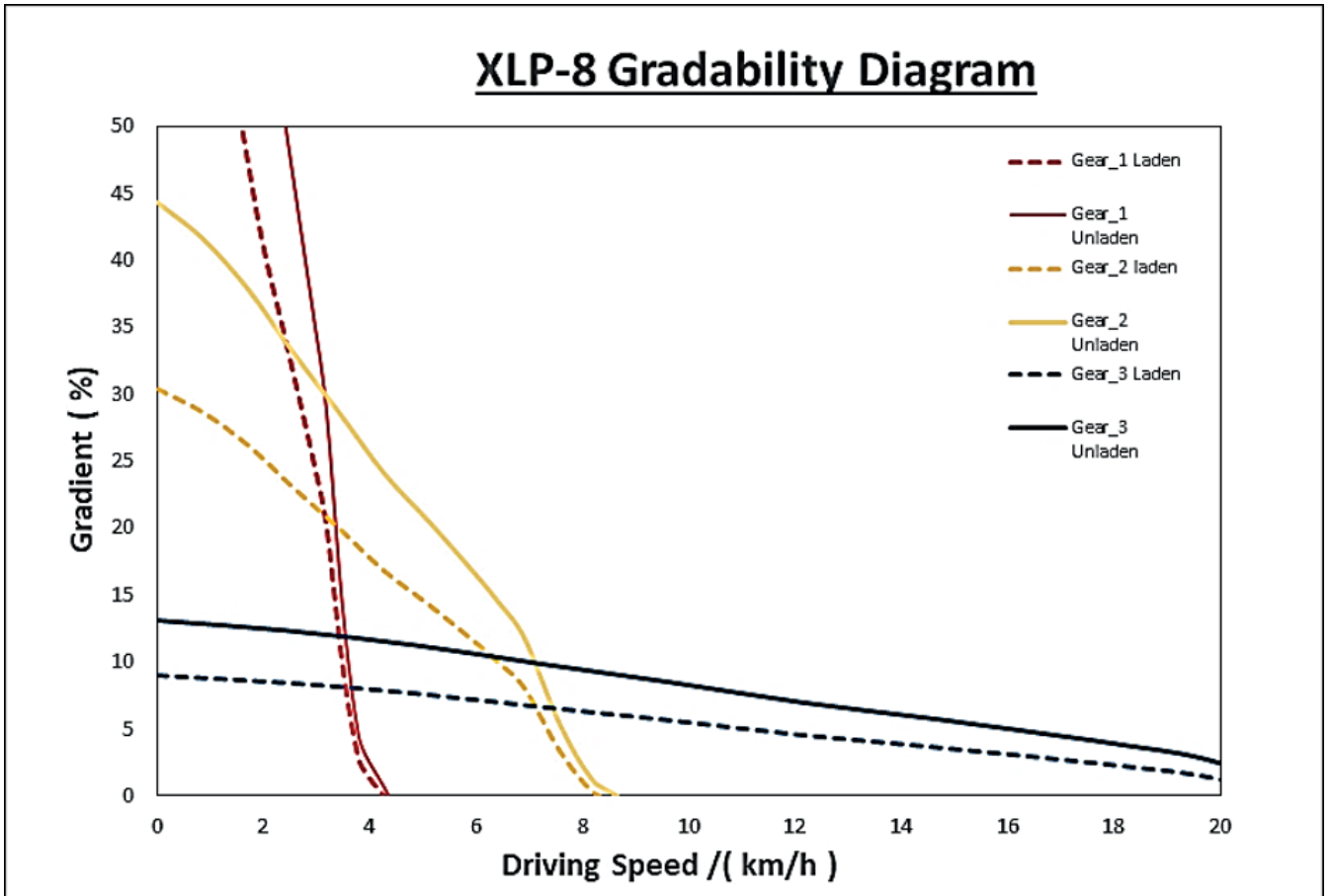
Right Turn



Left Turn



Gradeability Diagram





GHH

SOLID AS A ROCK

GHH Fahrzeuge GmbH
Emscherstr. 53
45891 Gelsenkirchen

Tel: +49 (0) 209 38907-0
Fax: +49 (0) 209 38907-109

E-Mail: info@ghh-fahrzeuge.de
Web: www.ghh-fahrzeuge.de

GHH Mining Machines
92 Kirschner Road
1459 Boksburg

Tel: +27 (0) 11 896 0600
Fax: +27 (0) 11 896 0603

E-Mail: sales@ghhmm.co.za
Web: www.ghhmm.co.za